
Test Measurement Report

FILIX , Stancija Pataj 52A
52000 Pazin , Croatia
Tel: +385 52 255 333
Email: info@filixlighting.com

Lamp Description:

Test: Filix Zero G

Manufacturer: Filix

Test laboratory: Filix R&D lab

Luminarie category: ZG324HTWGR24

Luminarie: Zero G 2200-6000K 24VGraze (600K 5.9W)

Lamp Category: Filix ZG324HTWGR24

Lamp: Outdoor

Rated lumens: 900,0 lm

Power: 5,9 W

Average color temperature : 6068 K

Gama 0 color temperature : 6426 K

Min color temperature : 5418 K

Max color temperature : 6679 K

Test Description:

Measure distance: 4,0 m

Lateral pitch: 2,5 °

Vertical pitch: 2,5 °

Lateral scan angle: 360,0 °

Vertical scan angle: 90,0 °

Light sensor: Minolta CL-200A

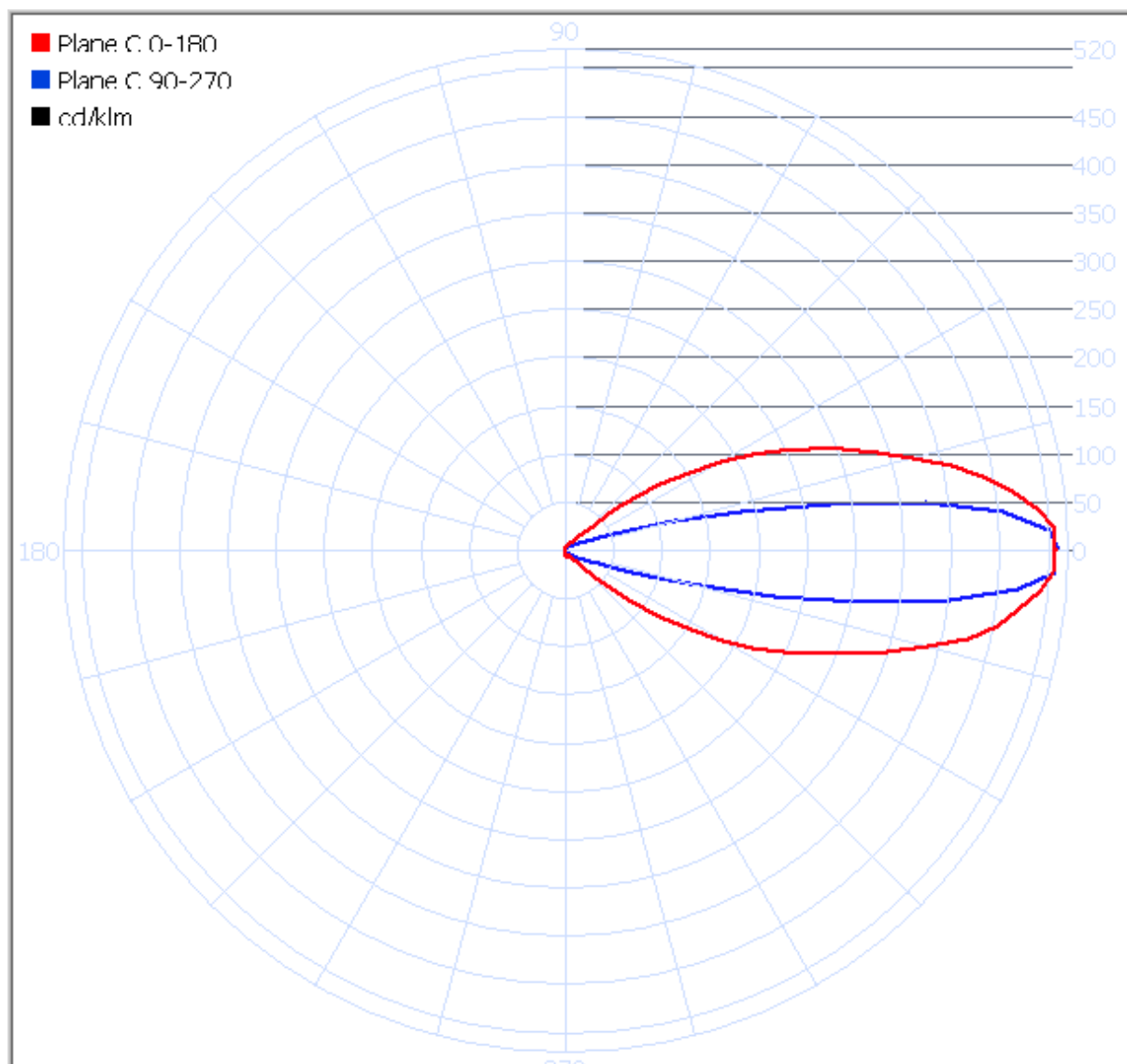
Issue date: 8.11.2018 12:11

Bug Ratings

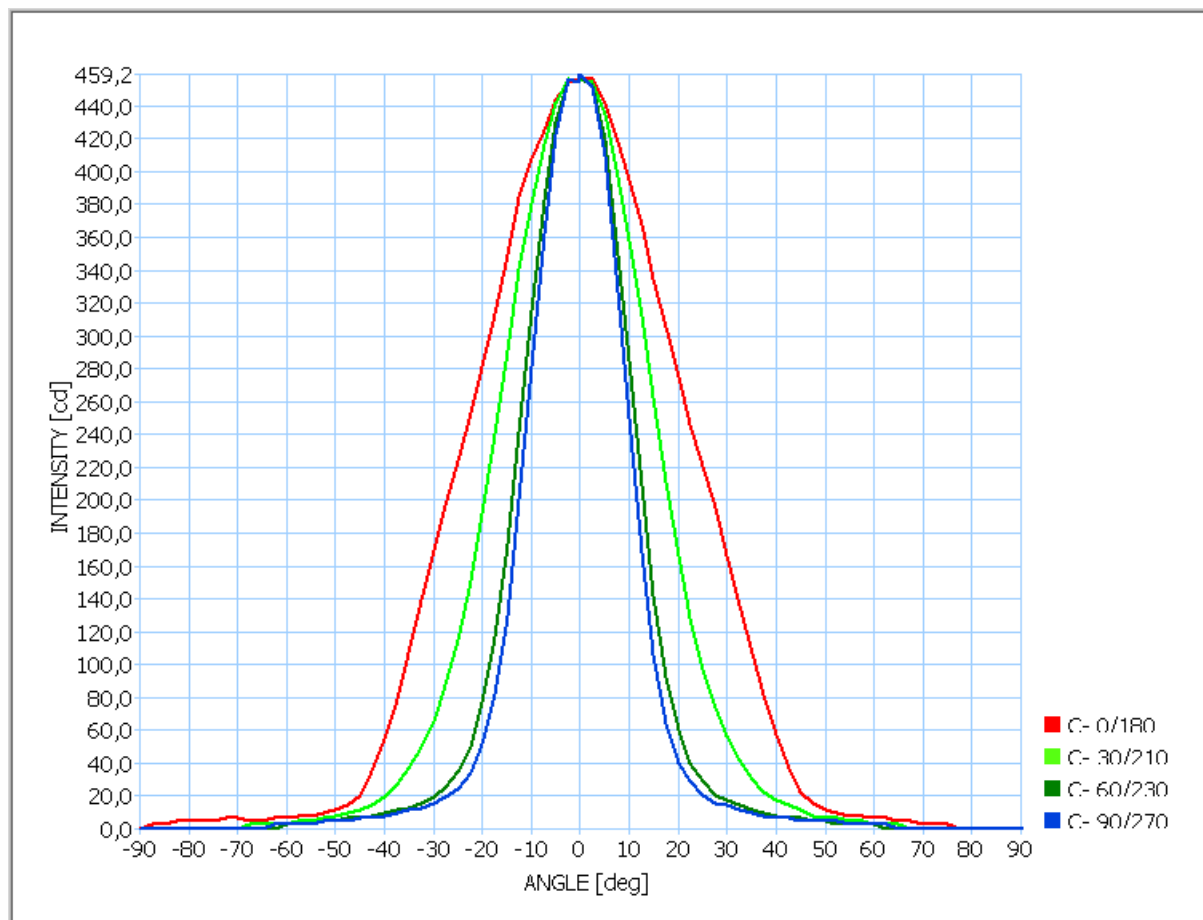
	Lumens	Lumens [%]
Forward Light		
Forward Lumens	86,947	49,416
FL (0°-30°)	68,361	38,852
FM (30°-60°)	17,584	9,994
FH (60°-80°)	1,003	0,570
FVH (80°-90°)	0,000	0,000
Back Light		
Back Lumens	89,002	50,584
BL (0°-30°)	69,644	39,582
BM (30°-60°)	17,522	9,958
BH (60°-80°)	1,616	0,918
BVH (80°-90°)	0,221	0,125
Up Light		
Up Lumens	0,000	0,000
UL (90°-100°)	0,000	0,000
UH (100°-180°)	0,000	0,000
Total Lumens	175,949	100,000

Back Light	Up Light	Glare
B0	U0	G0

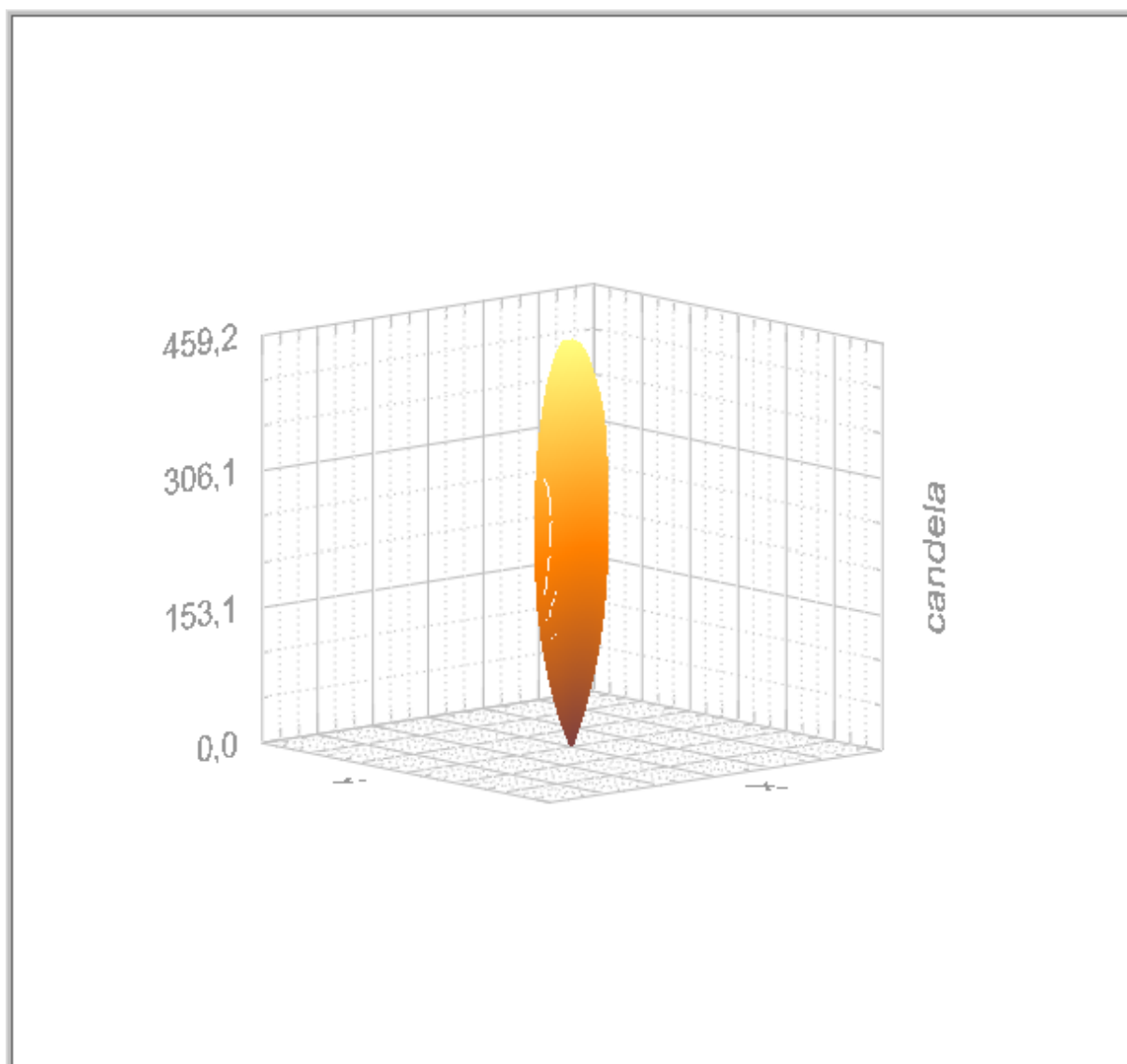
POLAR LIGHT DISTRIBUTION

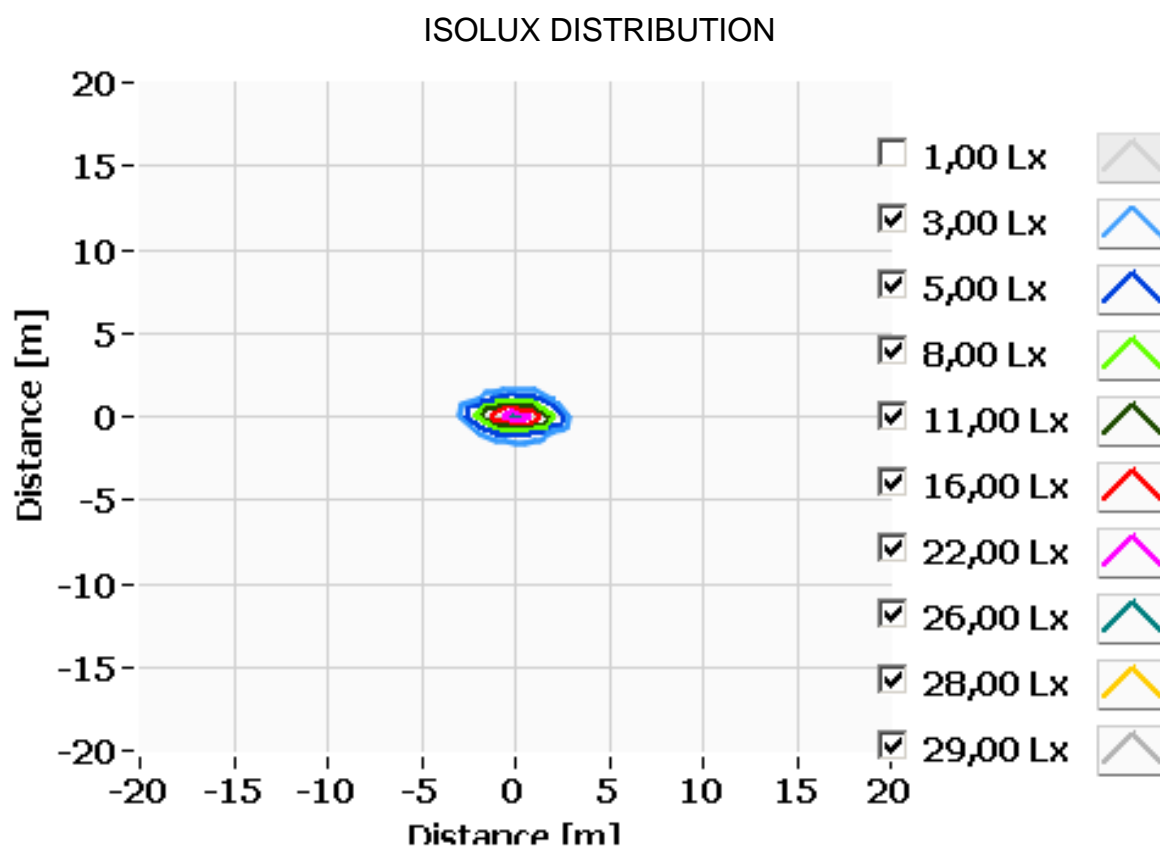


CARTESIAN LIGHT DISTRIBUTION

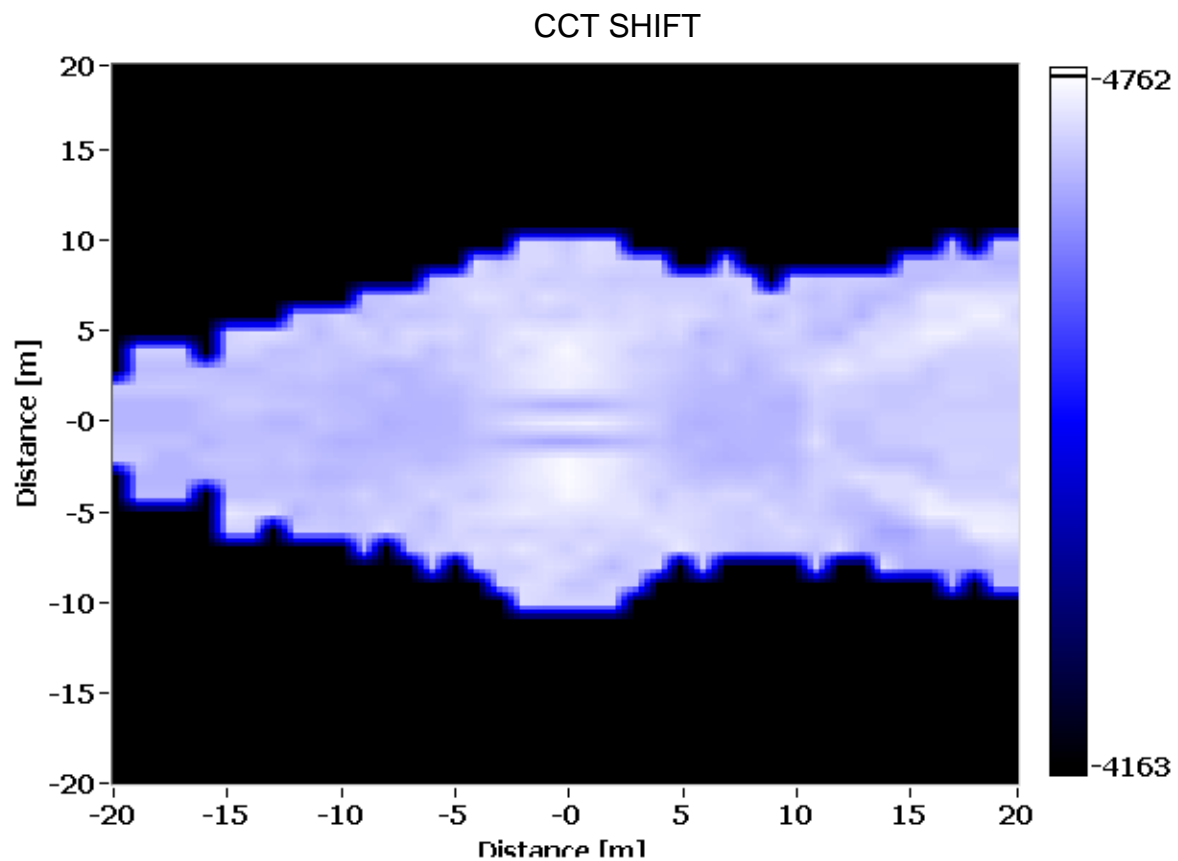


3D LIGHT DISTRIBUTION





Lamp height: 4,00 m



Lamp height: 4,00 m

Average color temperature : 6068 K
Gama 0 color temperature : 6426 K
Min color temperature : 5418 K
Max color temperature : 6679 K